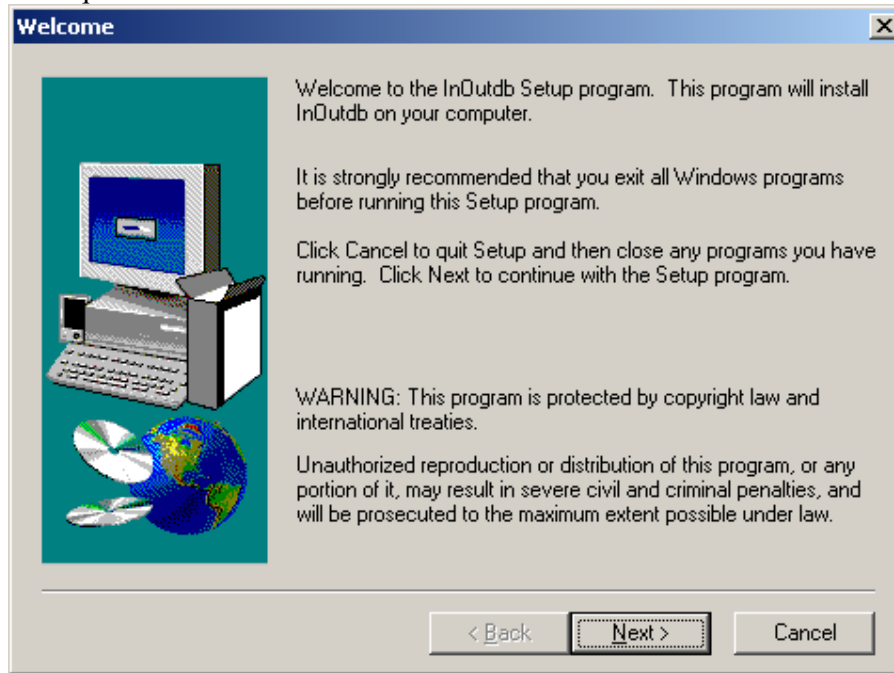
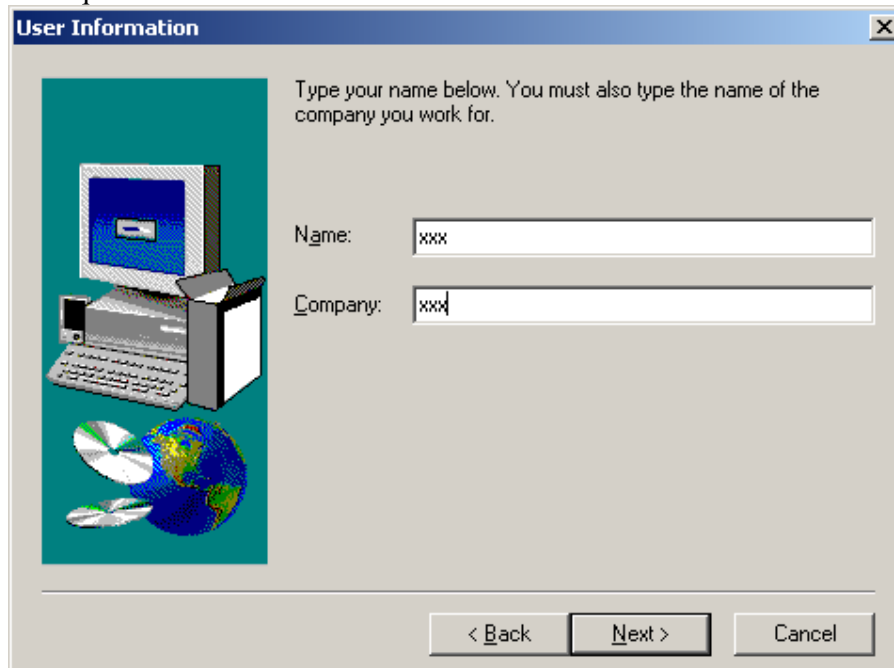
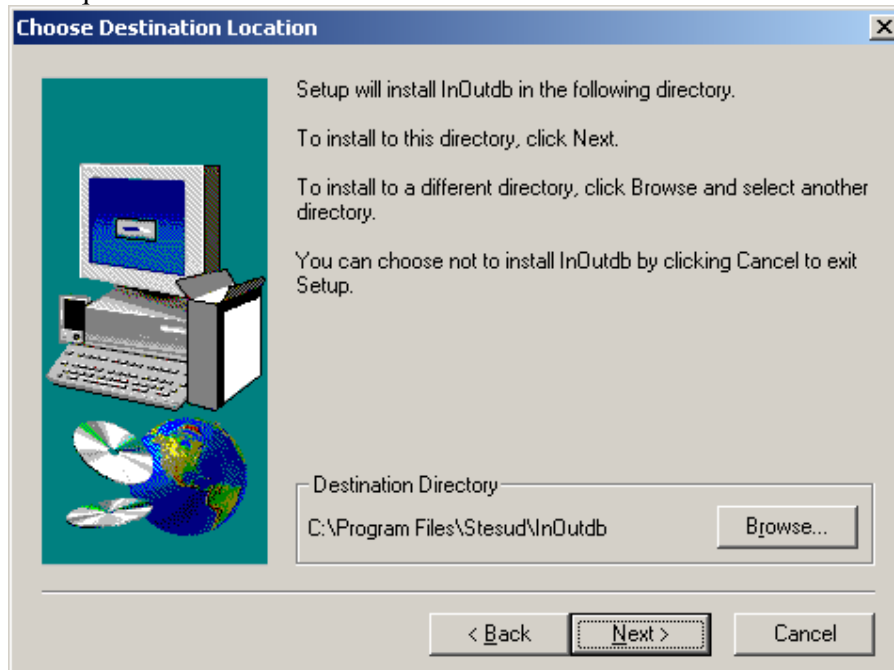


Procédure d'installation du DBE-BORLAND

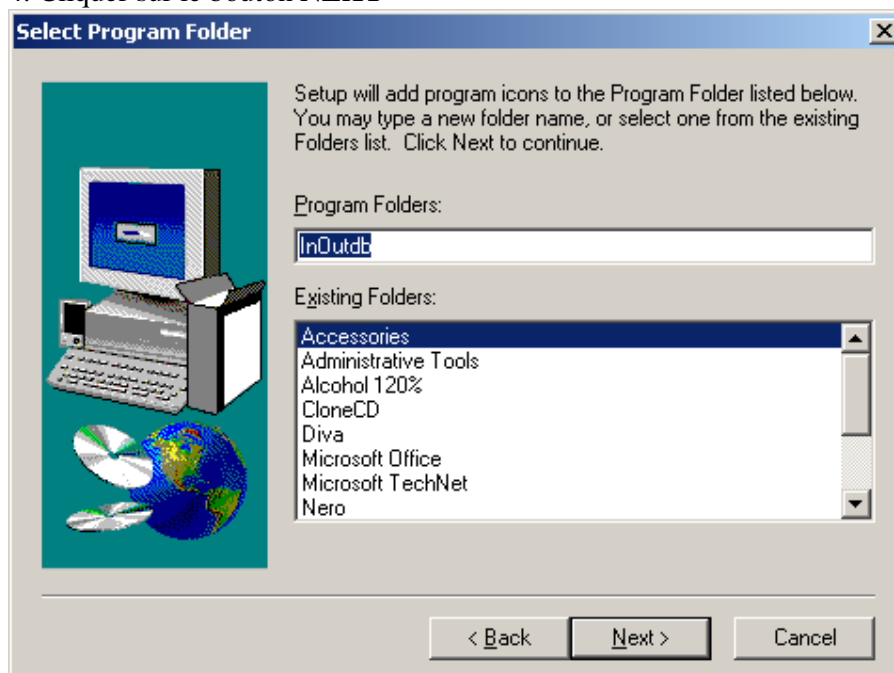
Lancer ... \InstLoc\DBE-Borland\setup.exe

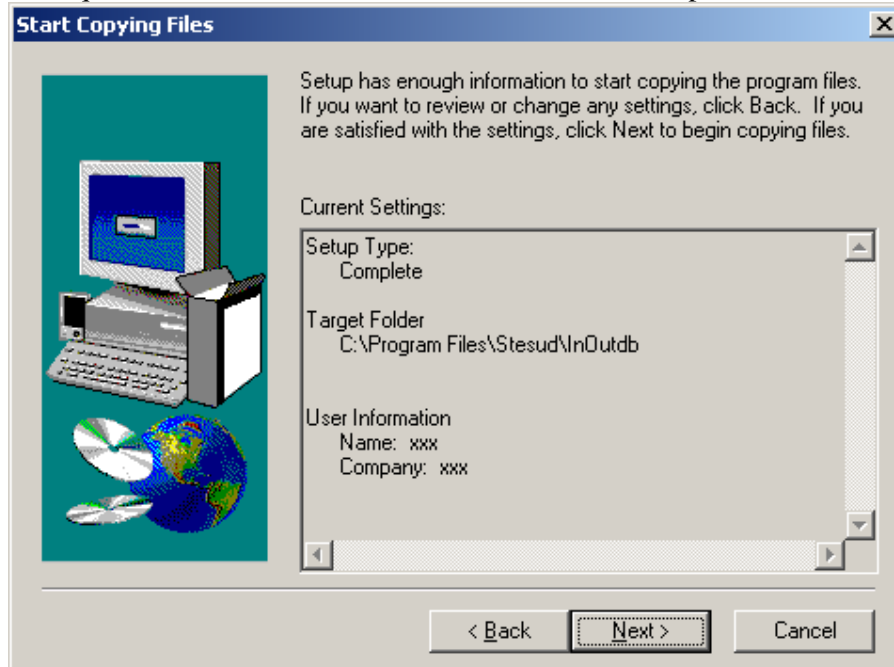
1. Cliquer sur le bouton NEXT**2. Cliquer sur le bouton NEXT**

3. Cliquer sur le bouton **NEXT**



4. Cliquer sur le bouton **NEXT**



5. Cliquer sur le bouton **NEXT** et attendre la fin de la copie des fichiers6. Cliquer sur le bouton **FINISH**