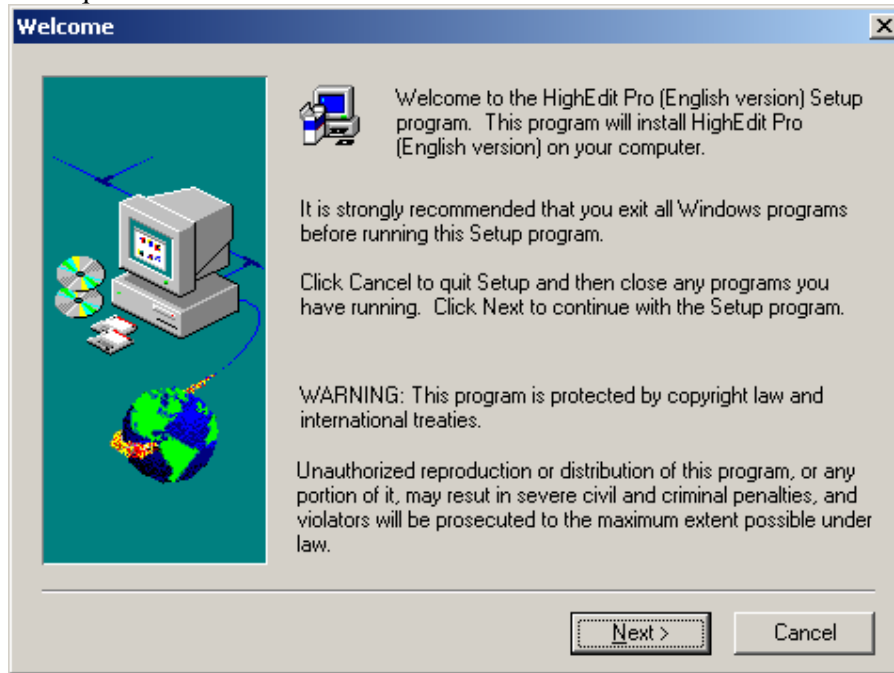
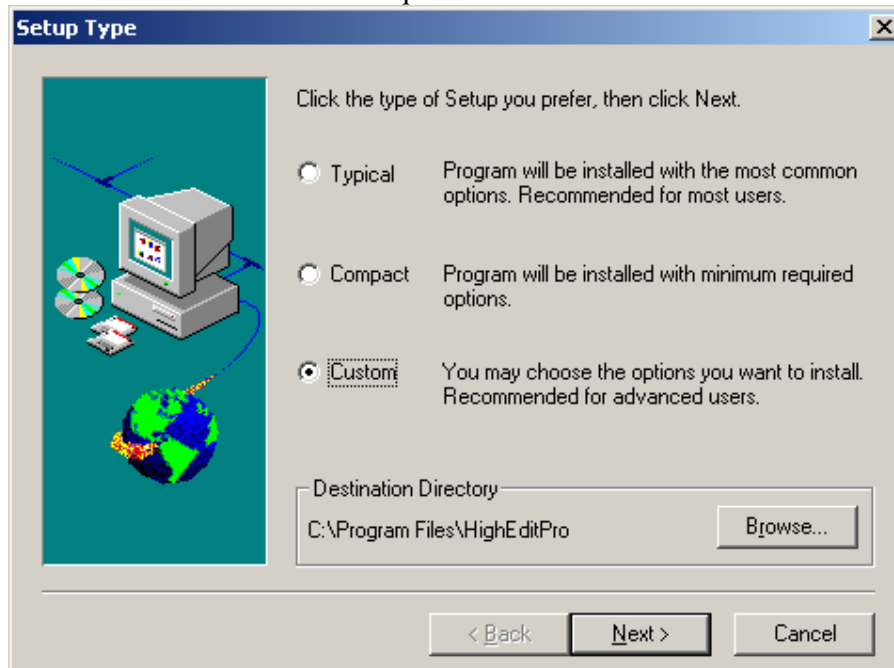
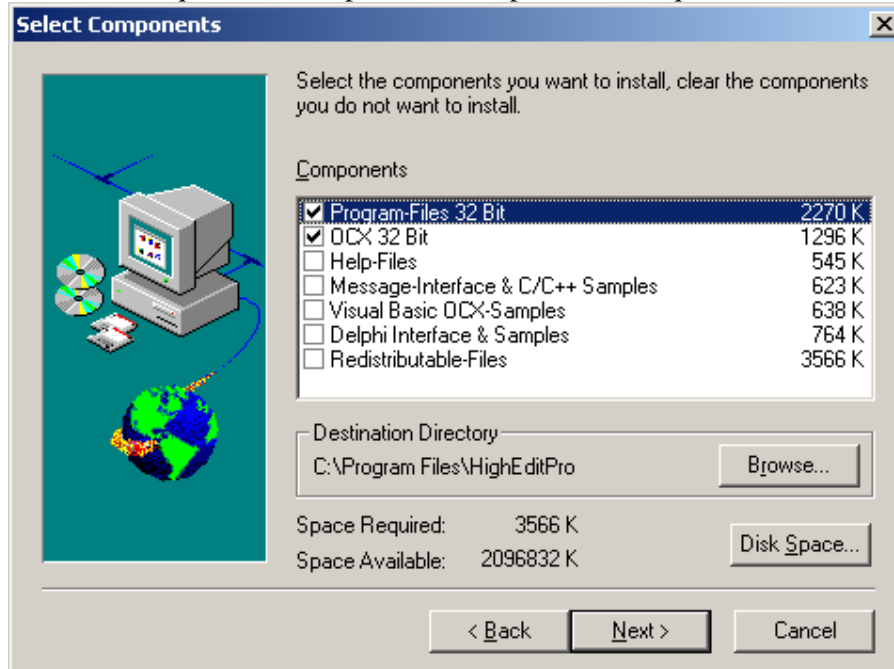
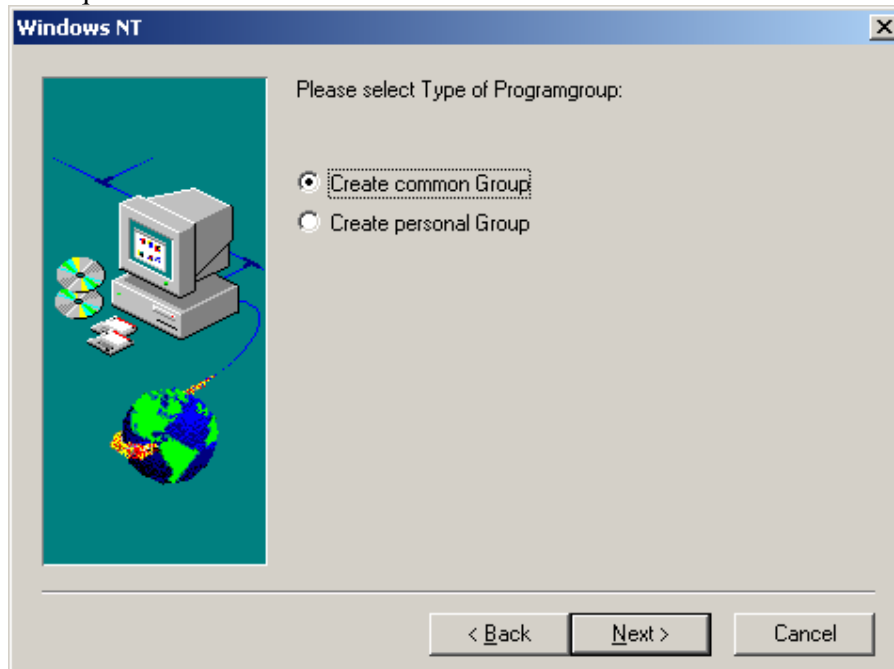
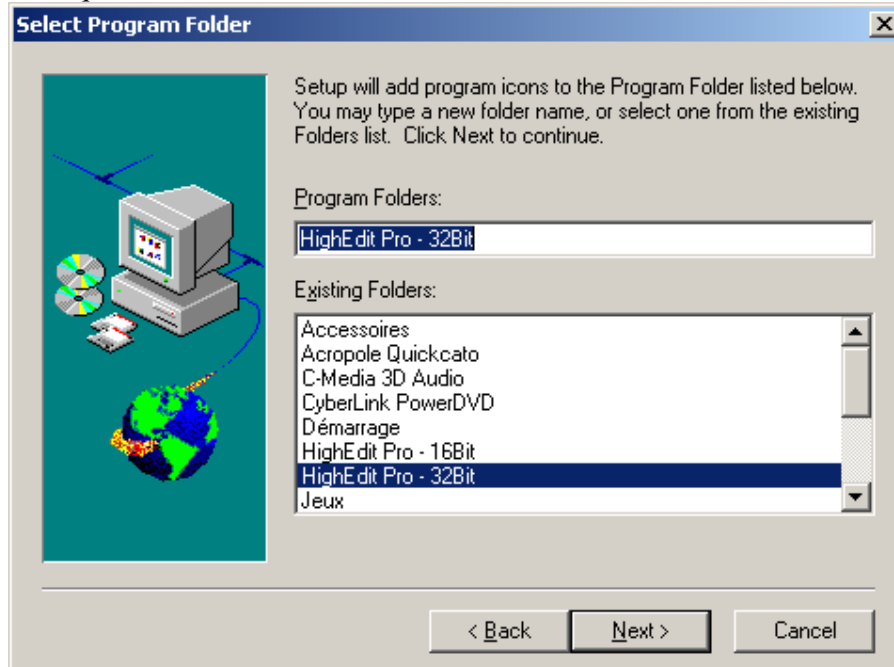
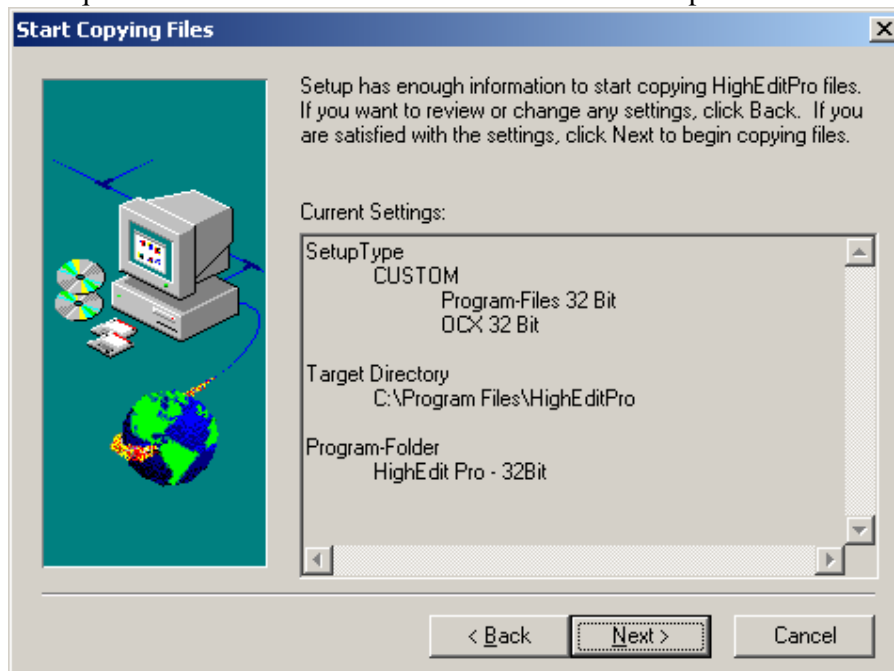


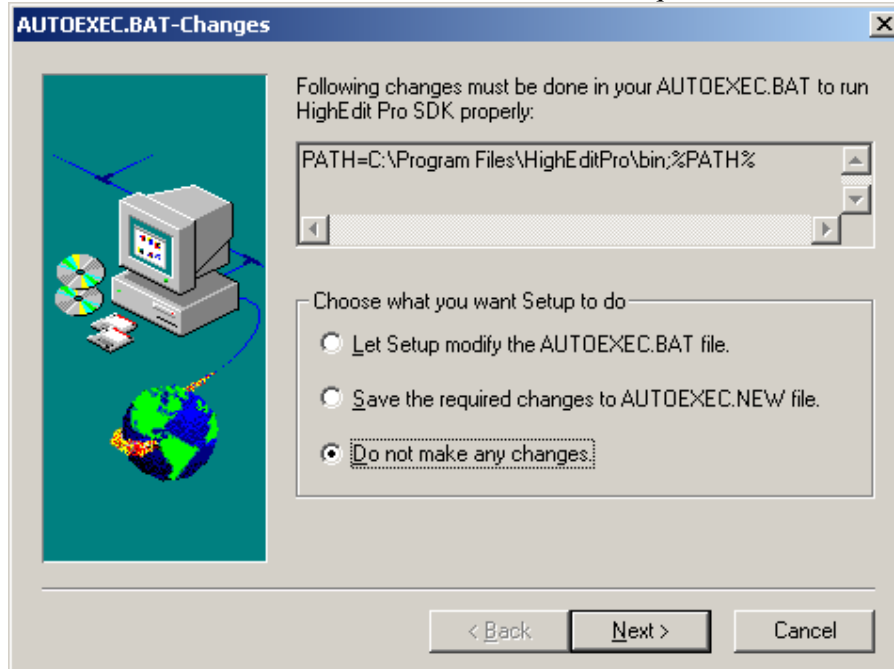
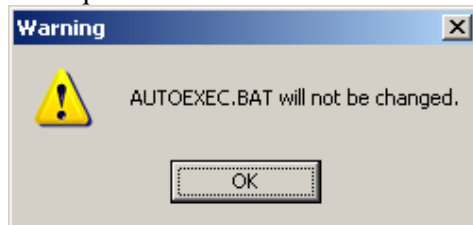
Procédure d'installation de HI-EDIT 32 bit

Lancer ..\InstLoc\HIEDIT\inst32\setup32.exe

1. Cliquer sur bouton NEXT**2. Sélectionner CUSTOM et cliquer sur le bouton NEXT**

3. Cocher uniquement les 2 premiers composants et cliquer sur le bouton **NEXT**4. Cliquer sur le bouton **NEXT**

5. Cliquer sur le bouton **NEXT**6. Cliquer sur le bouton **NEXT** et attendre la fin de la copie des fichiers

7. Choisir DO NOT MAKE ANY CHANGES et cliquer sur le bouton NEXT**8. Cliquer sur le bouton OK****9. Cliquer sur le bouton FINISH**