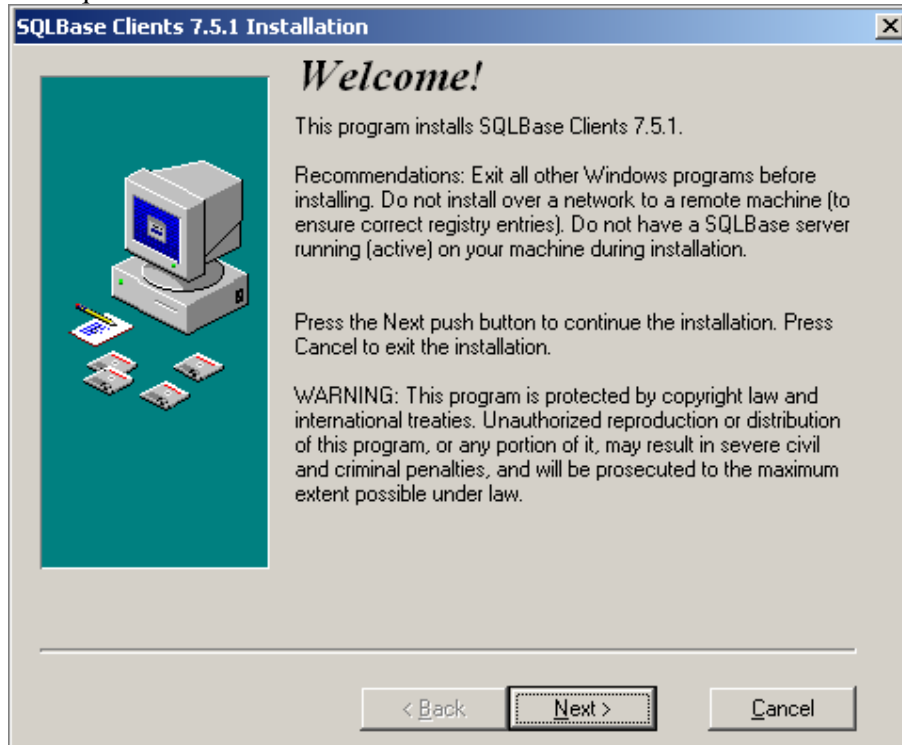
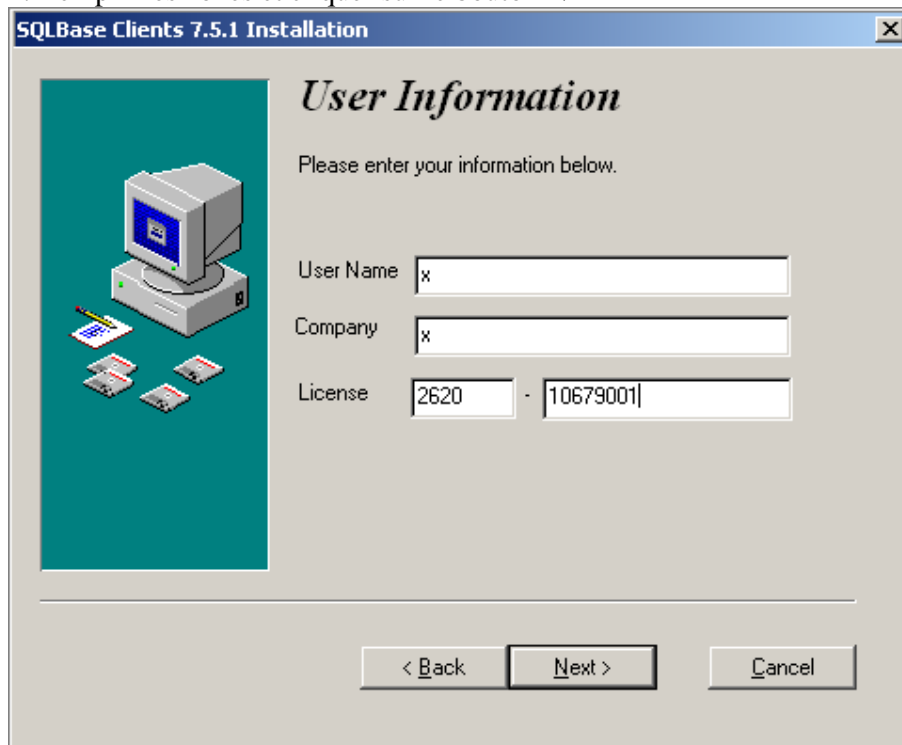
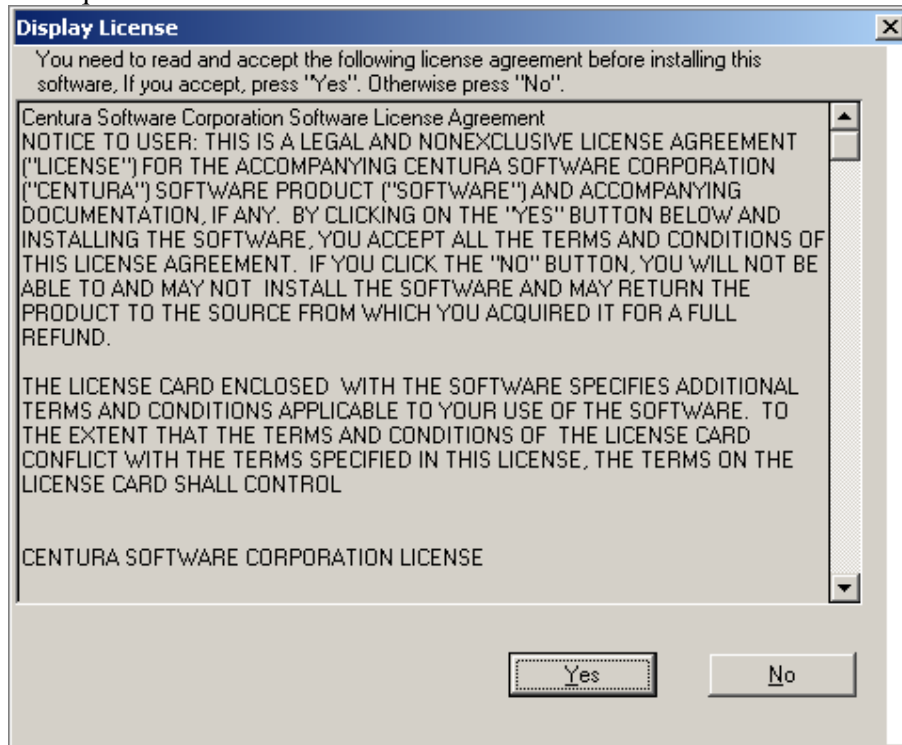


**Procédure d'installation du CLIENT CENTURA 7.5.1**

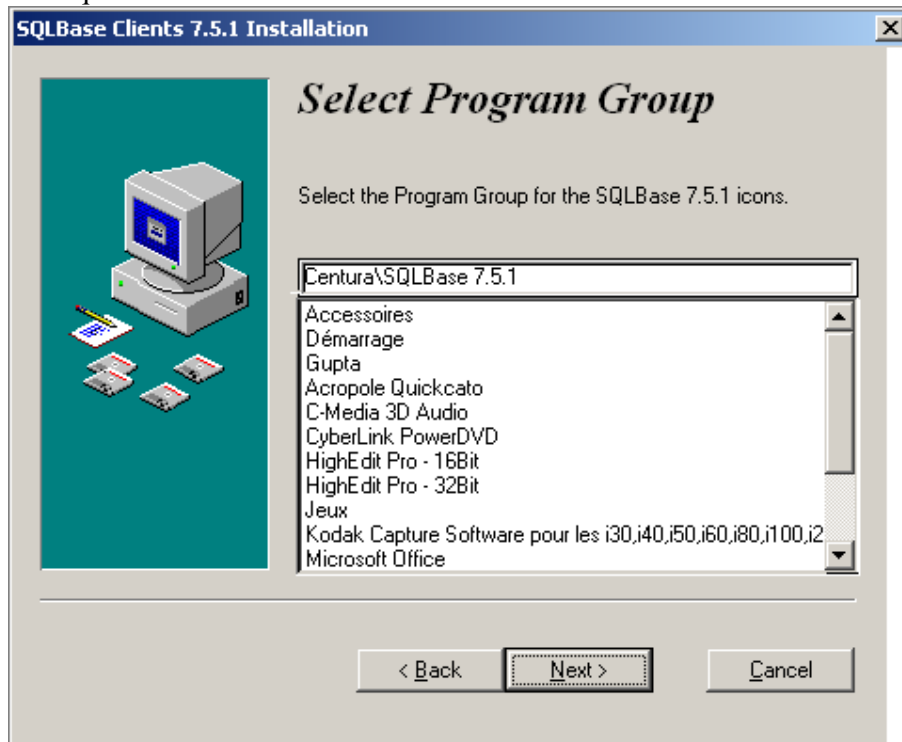
Lancer ..\Config\clients.exe

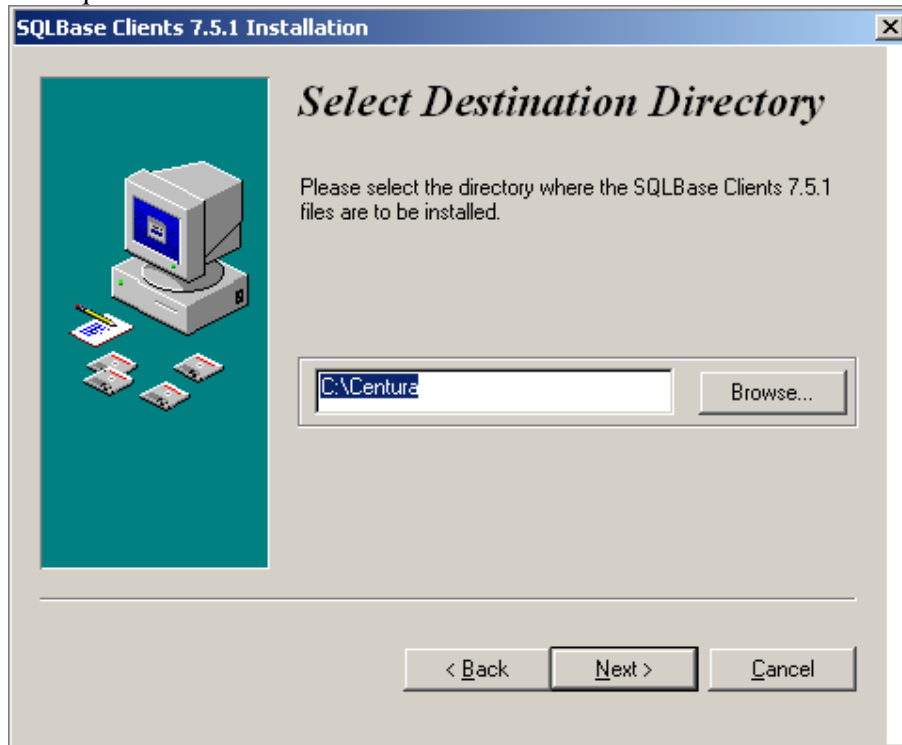
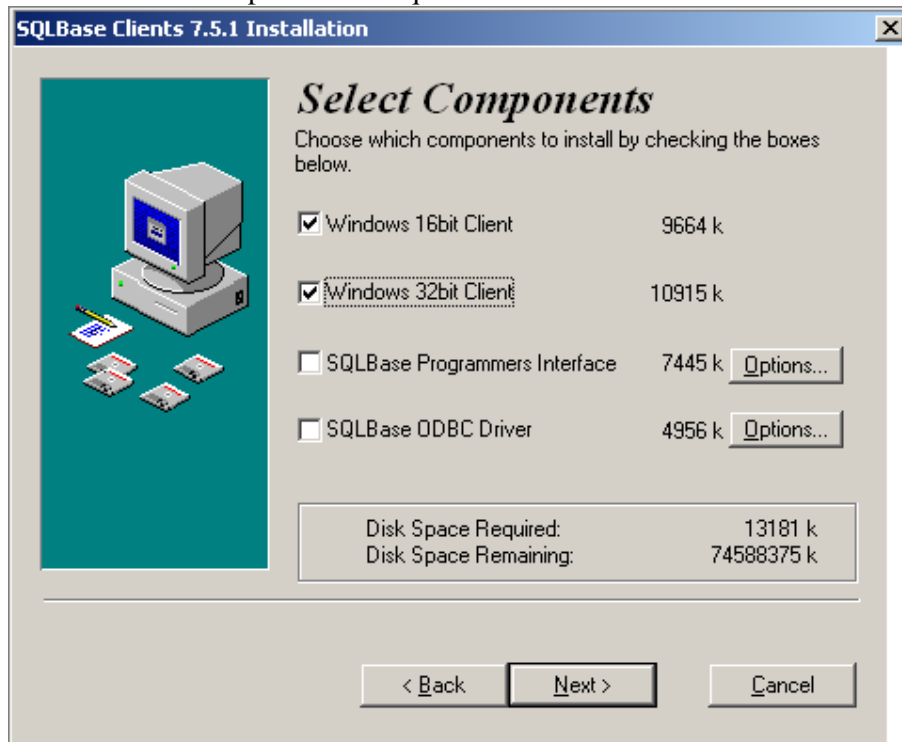
**1. Cliquer sur le bouton NEXT****2. Remplir les zones et cliquer sur le bouton NEXT**

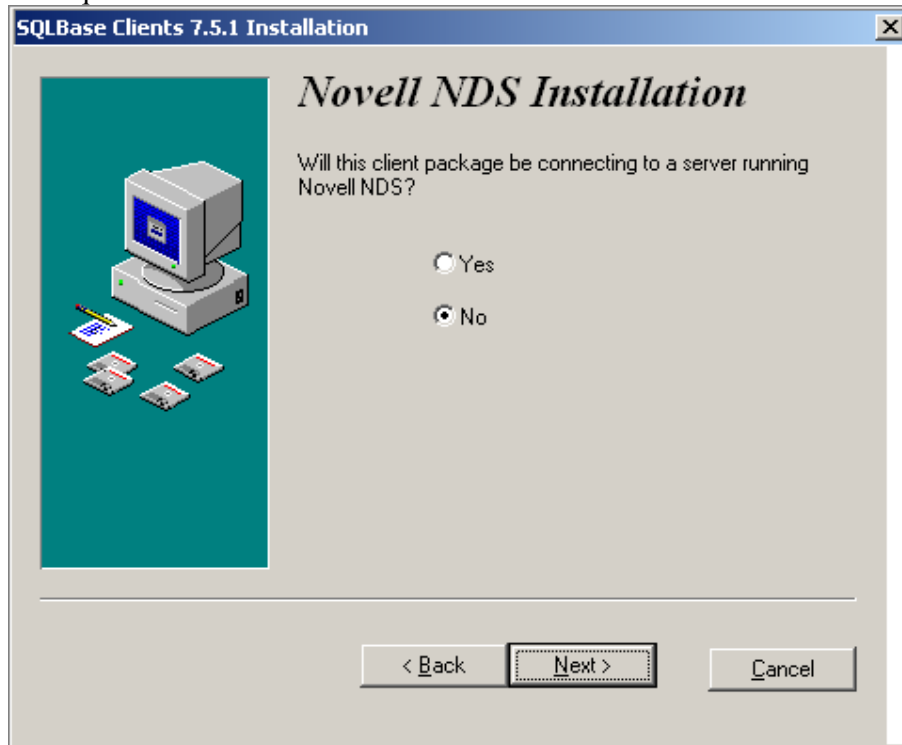
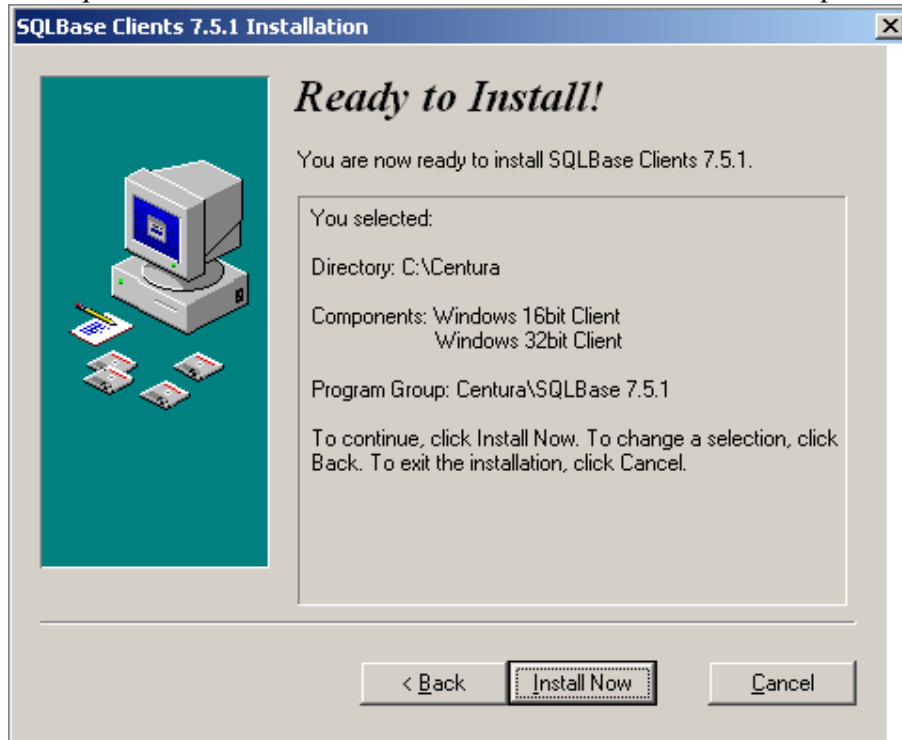
### 3. Cliquer sur le bouton **YES**

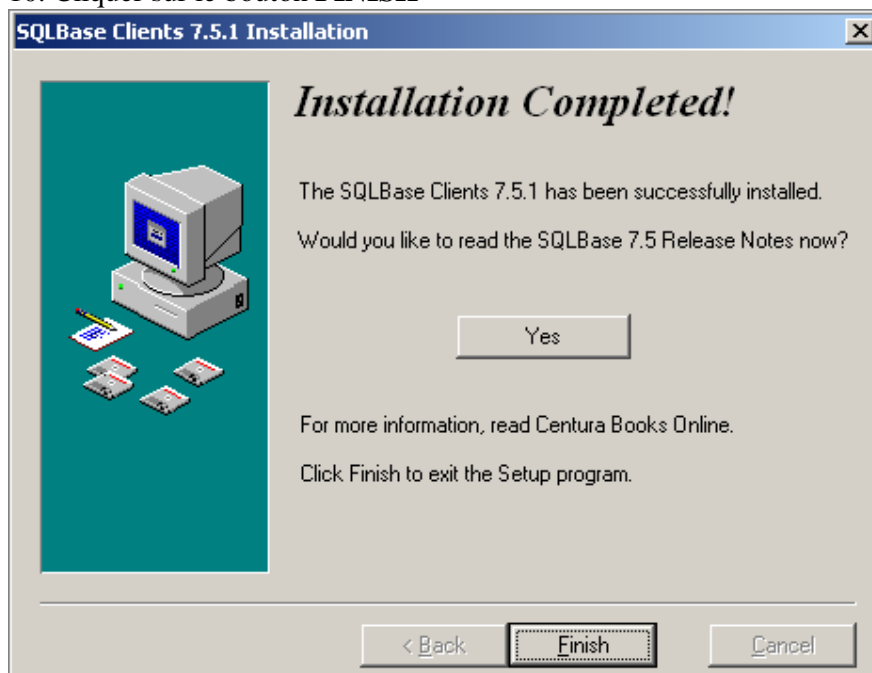


### 4. Cliquer sur le bouton **NEXT**



5. Cliquer sur le bouton **NEXT**6. Cocher les 2 composants et cliquer sur le bouton **NEXT**

7. Cliquer sur le bouton **NEXT**8. Cliquer sur le bouton **INSTALL NOW** et attendre la fin de la copie des fichiers

**9. Cliquer sur le bouton CONFIGURE LATER****10. Cliquer sur le bouton FINISH****11. Redémarrer le poste.**